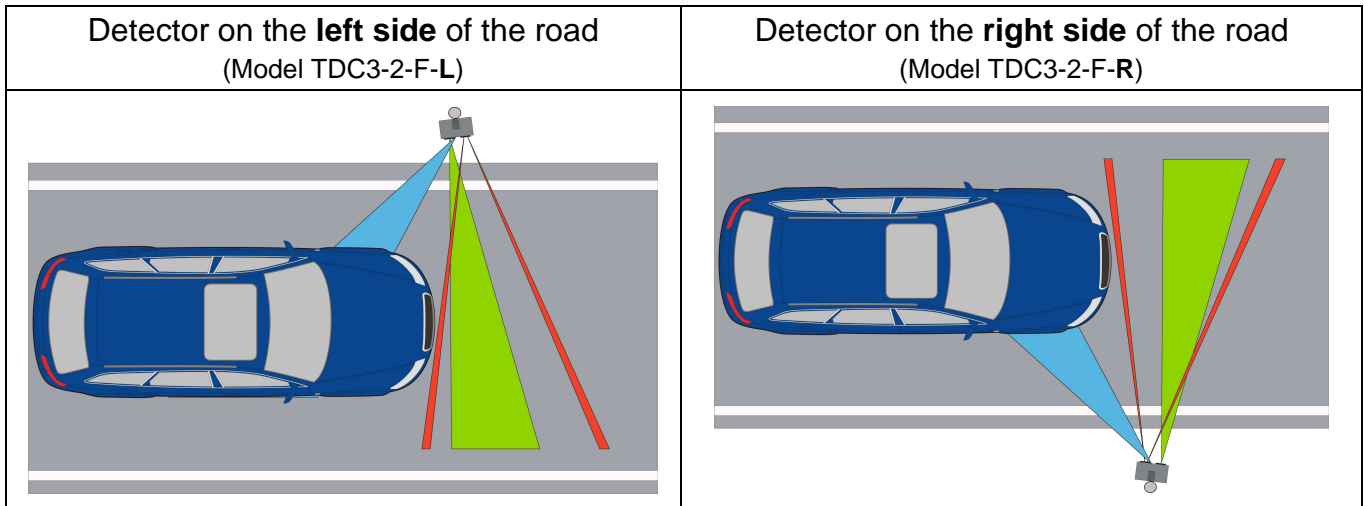


Installation Quick Reference Guide for TDC3-2 Detector in Side Mount Setup

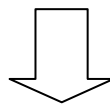
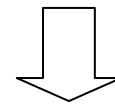
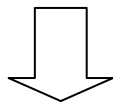
The following instructions must be closely followed to ensure optimal performance!

1 Mounting Location



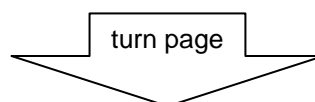
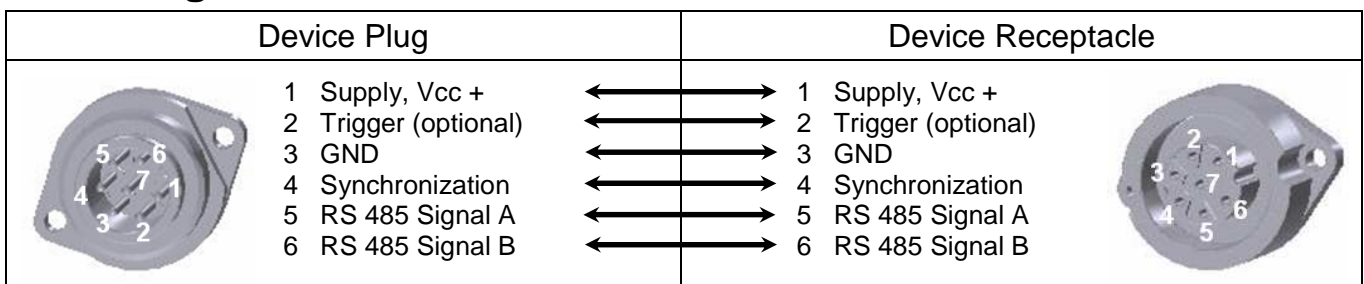
Important:

Turn the detector by 7° towards the receding traffic, see also graph above!
Verify that the detectors have an unobstructed field of view of the Doppler Radar to ensure optimal speed acquisition.

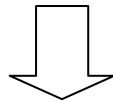
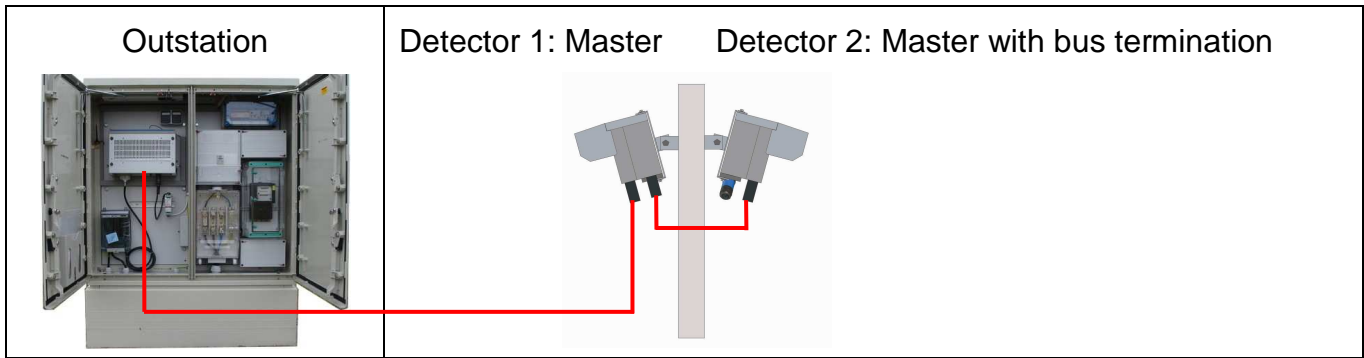


Detector model fits mounting location
Detector is properly aligned

2 Wiring



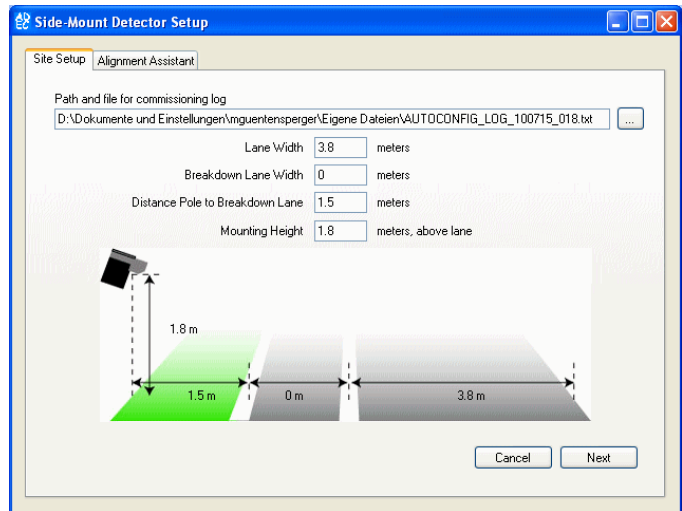
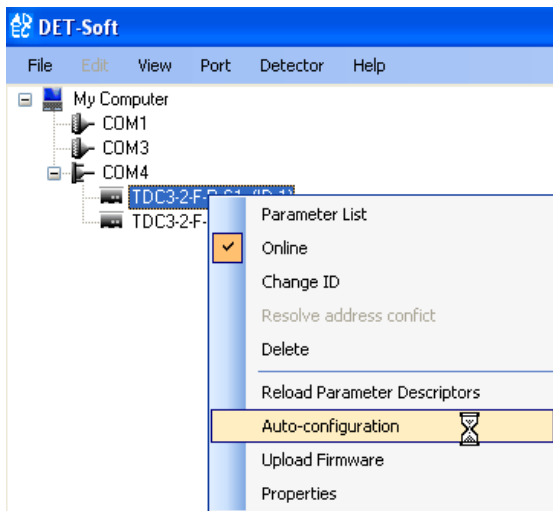
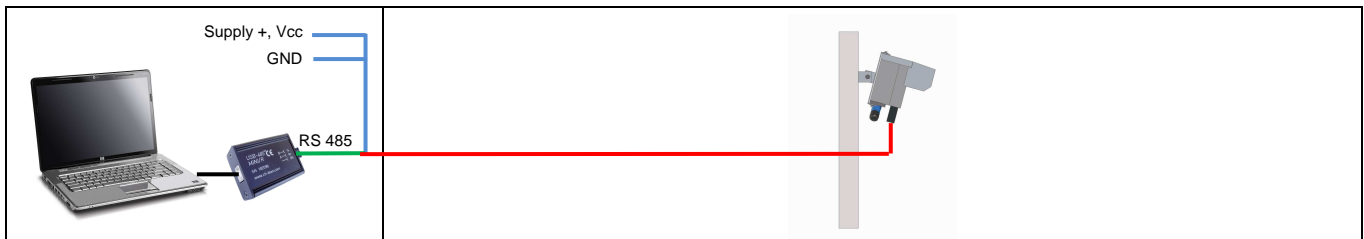
2.1 Example: Section with 2 Detectors on the same Pole



All detectors wired according to wiring guidelines

Supply voltage at all detectors is within permitted range of 10.5 – 30 VDC

3 Commissioning



All detectors successfully completed the Auto-configuration process

Location ID of this site: _____

Commission process successfully completed according to these instructions: Yes No

Verified plausibility of traffic data (recommended): Yes No

Technician: _____ Date: _____